

Exporting Files (v2.0)

Know your file types:

Vector File Types	Bitmap File Types
-------------------	-------------------

.svg	.png
.eps	.jpg / .jpeg
.pdf	.gif
.ai	.bmp
	.tif / .tiff

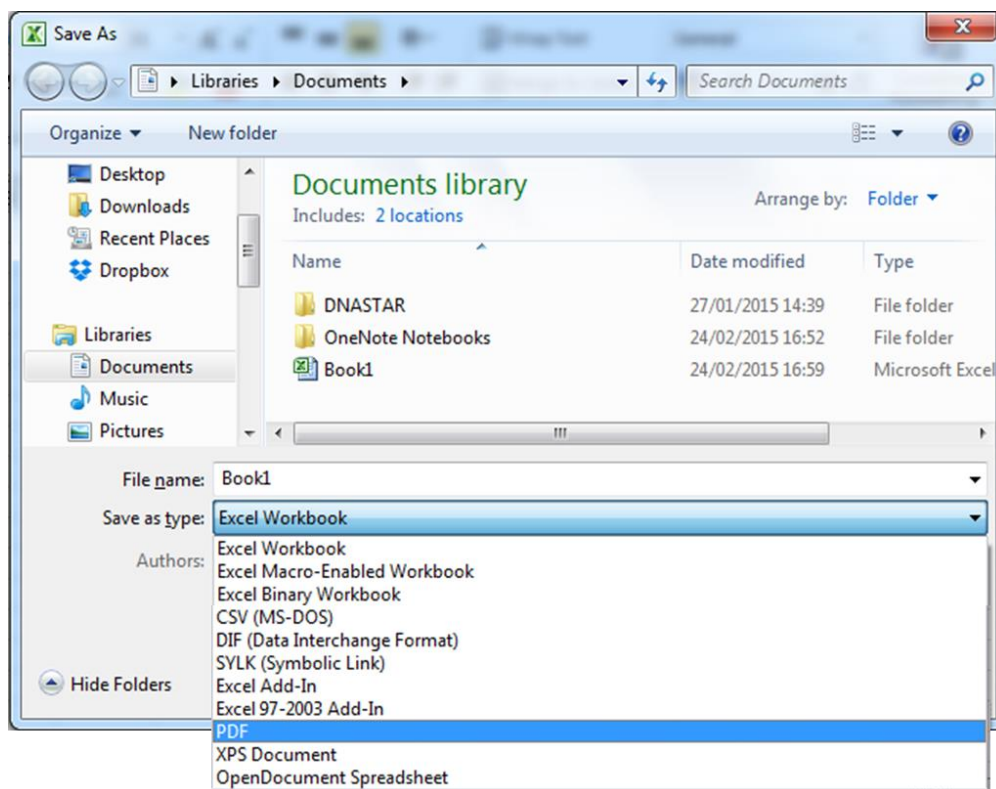
Choosing between vectors and bitmaps

Broadly speaking, vectors should be used for anything that has been generated by a computer – typically graphs, illustrations and text. Figure components that have been generated by a camera such as microscopy images or blot photos should be kept as bitmaps.

Vectors have another trick up their sleeve too – bitmap images can be *embedded within* a vector image. This is how all publication figures should be created: vector graphics for assembly and annotation of figure panels with any bitmap images embedded within.

Exporting vector files from common programs

Excel - Move/copy your plot to its own worksheet, then File > Save As and choose PDF file format

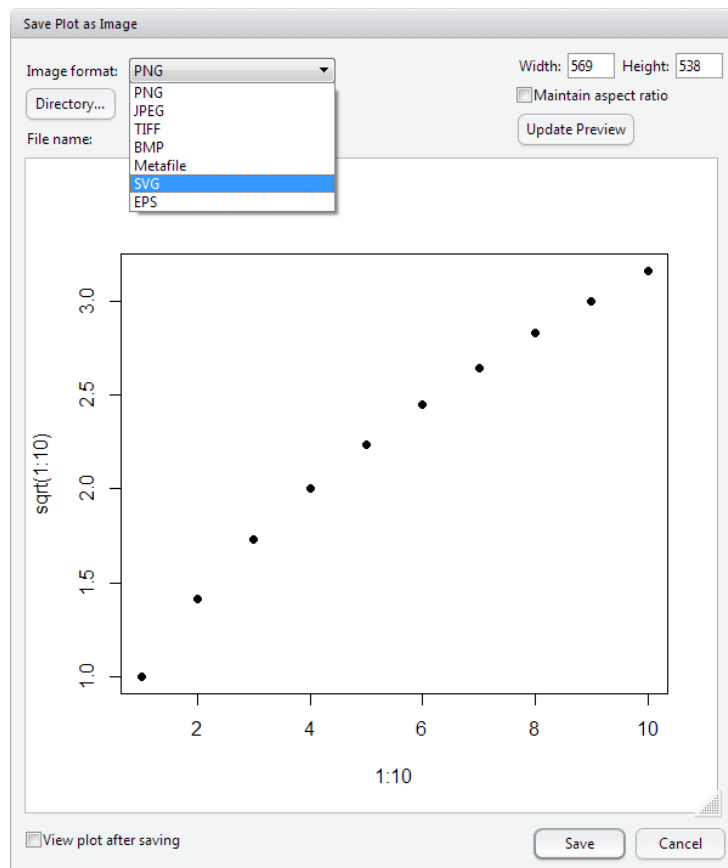


R / RStudio – Plots can be saved as SVG files

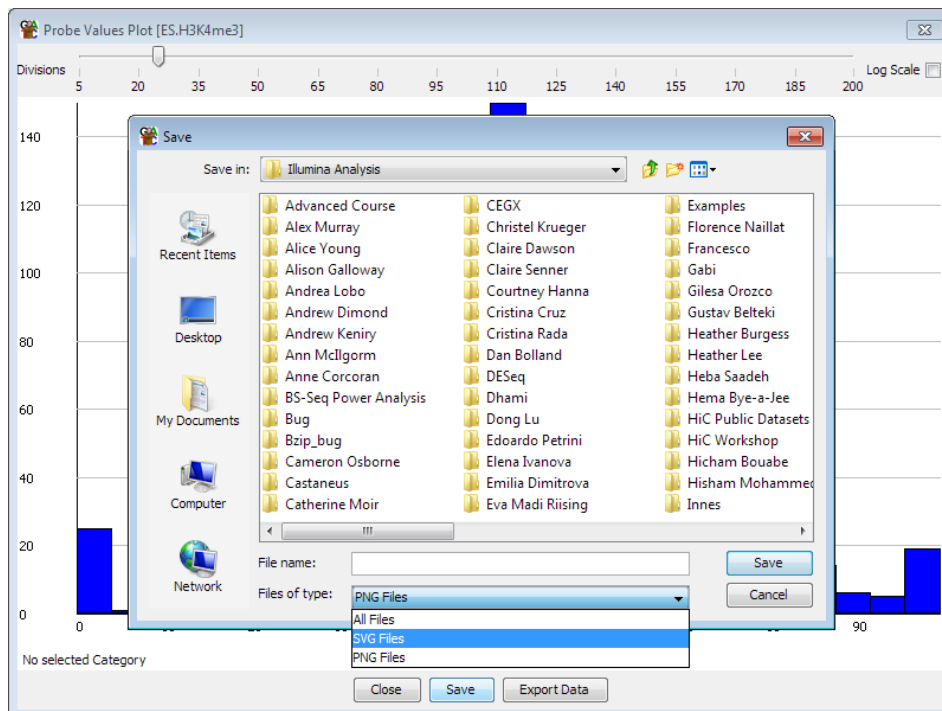
R:

```
setwd("D:/")  
svg(filename = "my_plot.svg", width=5, height=5)  
plot(1:10, sqrt(1:10), pch=19)  
dev.off()
```

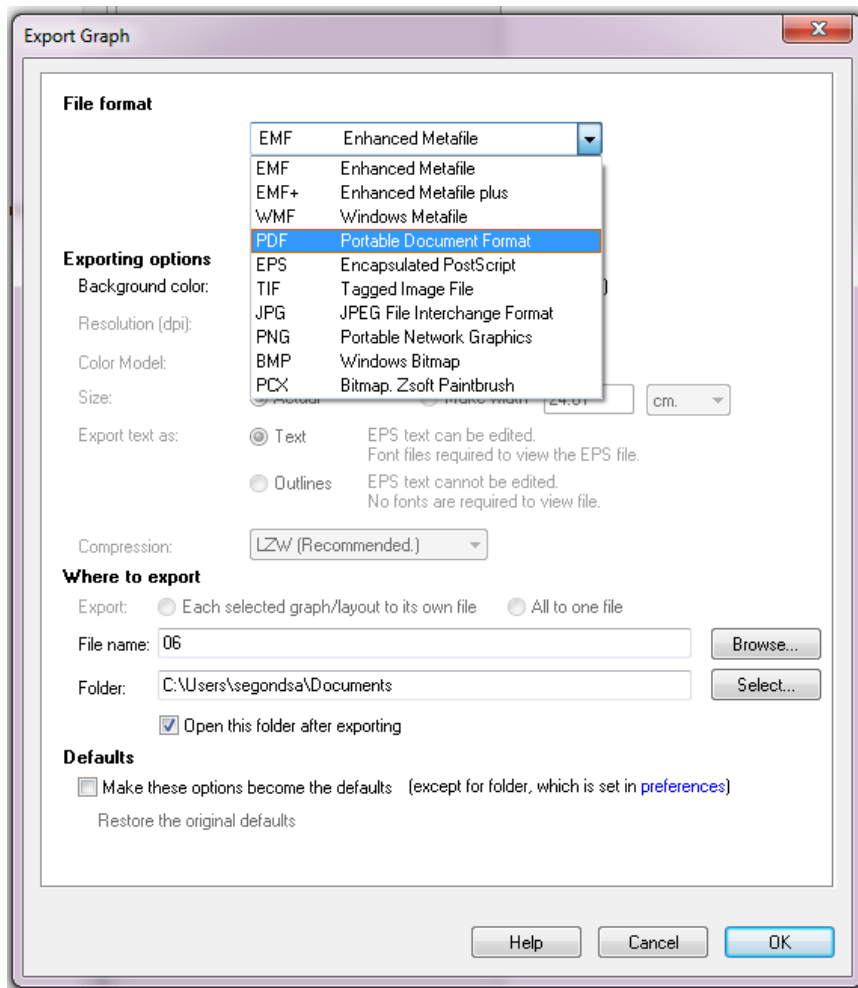
RStudio:



SeqMonk – Choose SVG as the File Format when saving plots



GraphPad Prism – File > Export As, and choose PDF as the File Format



FlowJo -Choose SVG as the File Format when saving plots

